


■ GEBERIT

# Clean drains.

Solutions for wetroom showers.

**KNOW  
HOW**  
INSTALLED

A high-angle, close-up photograph of a modern shower stall. The walls are covered in dark, rectangular tiles with a subtle, textured pattern. A black shower head is mounted on the wall, with its flexible hose hanging down. In the foreground, a sleek, metallic linear drain is set into a dark, flat shower pan. The lighting is dramatic, highlighting the textures and materials.

**Fewer hurdles – more sales.**

Wetroom showering is the latest trend and opens up new opportunities for bathroom designers, plumbers and installers. Geberit helps you be successful in this lucrative segment.

## **Wetroom showering is booming.**

More and more customers want to have an open design in their showering area.

Our systems for wetroom showering offer very individual solutions to fulfil these wishes.

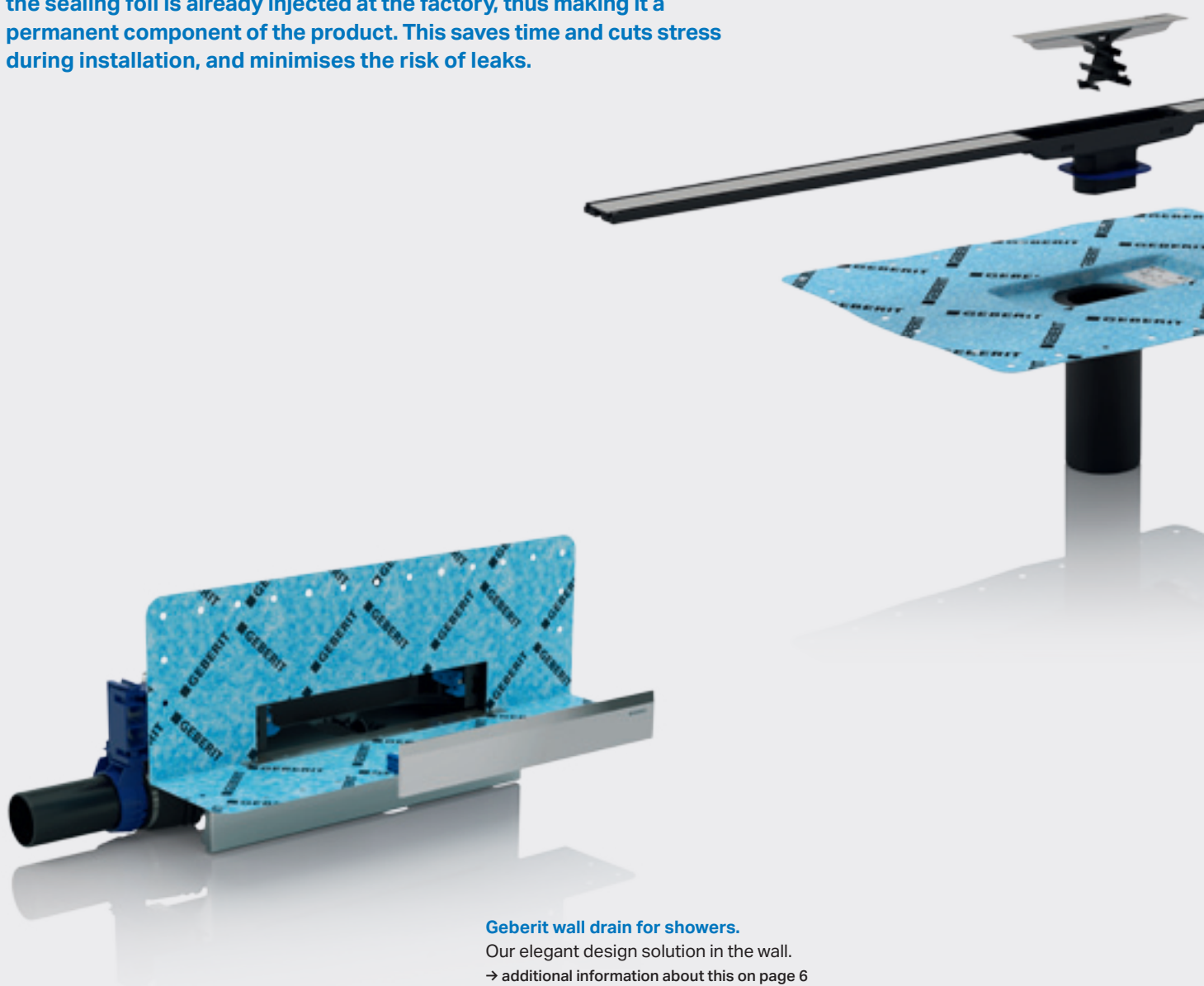
The Geberit trademark guarantees timeless design with respect to function and aesthetics, the best in quality and a unique know-how for drainage – with clear advantages for the designer, plumber and installer and the customer.

Which solution suits your project? You will learn more about wetroom showering with Geberit on the following pages. We look forward to increasing your success with our know-how and our products.

# Many advantages.

## Clear added values with the wetroom shower solutions from Geberit.

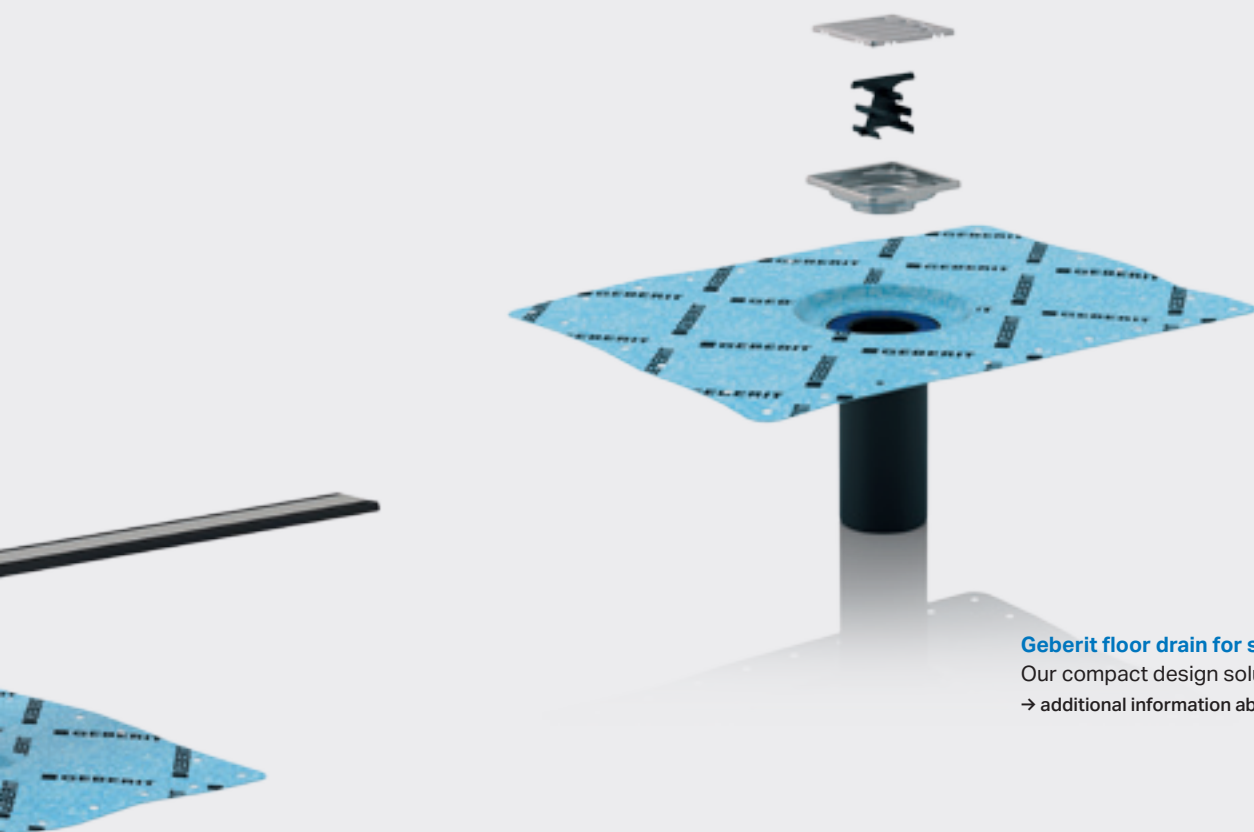
There are good reasons to decide on a solution from Geberit for wetroom showers. Whether it be wall drains, shower channels or floor drains: the assortment makes it possible to tailor the installation precisely to the building situation and the customer preference. The greatest challenge – the caulk – is perfectly prepared because the sealing foil is already injected at the factory, thus making it a permanent component of the product. This saves time and cuts stress during installation, and minimises the risk of leaks.



### Geberit wall drain for showers.

Our elegant design solution in the wall.

→ additional information about this on page 6



**Geberit floor drain for showers.**

Our compact design solution in the floor.  
→ additional information about this on page 10

**Geberit CleanLine shower channels.**

Our solution for elegant designer lines in the floor.  
→ additional information about this on page 8

---

**Fine design from Geberit:**

- high-quality and beautiful
- reliable thanks to injected sealing foil
- simple handling from order to installation
- integrated acoustic insulation
- for new construction into screeded floors
- fewer codes for easy ordering
- easy to clean

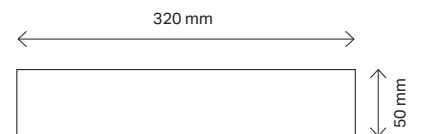
# Geberit in wall drain for showers.

## Our design solution in the wall.

The Geberit in wall drain allows wetroom showering in pure form. Integrated behind the wall, it is outstanding not only for its elegance but also for its clear added value in terms of planning, installation and maintenance.



A pleasure to the eye – and to the installer



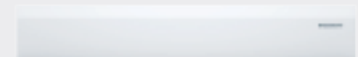
### Colours/product materials



Gloss chrome



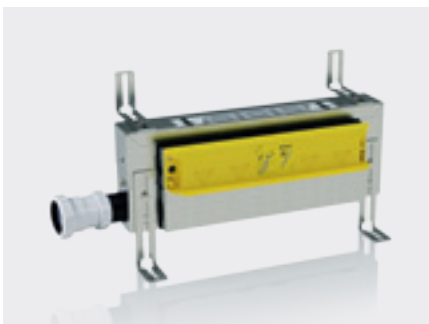
Brushed stainless steel



White alpine

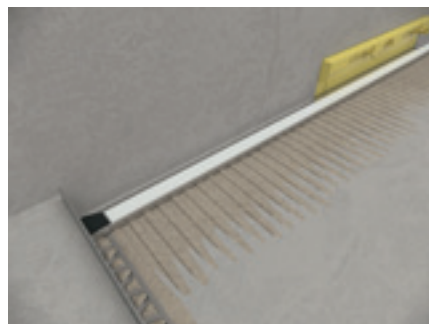


Can be tiled according to preference



### Flexible installation

The Geberit in wall drain for showers can be adjusted to fit most wetroom installations as adjustments can be made to the height of the installations as well as the depth which helps accommodate for the tile depth.



### Well-thought-out all down the line

The collector profile directly in front of the wall supports the slope and collects dirt and deposits so that they can be easily washed away.



### Developed for optimum hygiene

The Geberit in wall drain for showers features an integrated hair trap which can be removed and washed out in no time at all. The cleaning of the shower floor is particularly simple with in wall drains.



- 
- Innovative solution for integration in prewall systems
  - Clear separation of trades thanks to pipeline placement in the wall
  - Collector profile for efficient and precise formation of the slope in the floor

# Geberit CleanLine shower channels.

## Our design solution in the floor.

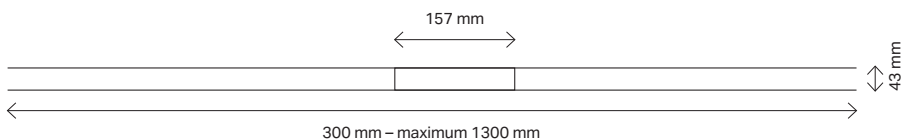
Geberit CleanLine shower channels combine elegant appearance with the easy installation of a floor drain. In addition, the innovative system solves the hygiene problem many shower channels have.



Easy to install – and clean

### Top design made easy

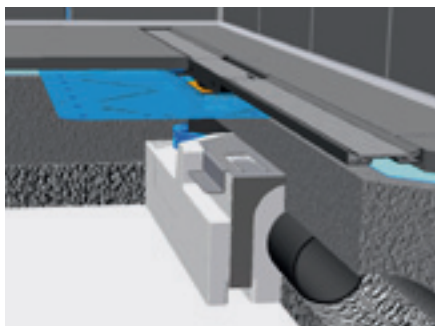
Shower channels are very popular with their timeless designer lines. Geberit CleanLine shower channels have another big advantage: thanks to their innovative technology, they are very easy to install – and just as easy to clean.



### Colour / product material



Brushed stainless steel



### Significantly easier installation

Geberit CleanLine shower channels have a two-piece design: a collector surface in stainless steel forms the visible part. Below that is a central trap and waste that is mounted exactly like a Geberit floor drain. Thanks to the sealing foil injected at the factory, this is firmly connected to the drain and ensures maximum tightness.



### Flexible length and placement

The Geberit CleanLine shower channels come in one size and can be cut to the required length at the time of installation. The design harmonises with any floor and can be placed either close to the wall or in the middle of the shower area.



### Designed for simplicity and cleanliness

Shower channels are often difficult to clean, but not the Geberit CleanLine shower channels: the dirt flows off the collector surface perfectly and the comb insert can be removed and washed out in no time at all.





- 
- Unique design with collector surface, comb insert and trap and waste
  - Uncomplicated and as reliable as a floor drain
  - Extremely high customer satisfaction thanks to simple cleaning and modern linear appearance

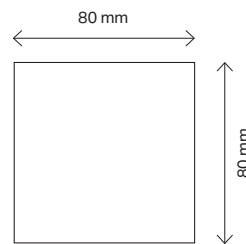
# Geberit floor drain for showers.

## Our simple and compact solution.

The Geberit floor drain for showers is the simple solution for wetroom showering with clear advantages: reduced design, ingenious function and simple installation.



Unimpeded trap and waste – to the point



### Big performance in a small package

Wherever installation needs to be as simple as possible and costs kept as low as they can be, the Geberit floor drain is the best solution – and the most compact one as well, with only 80 × 80 mm grating area. Hidden under the grating are the great qualities that make Geberit one of the world's leading providers of sanitary technology.

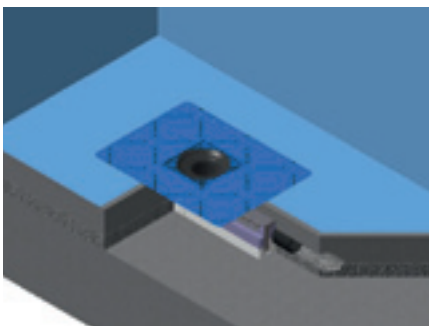
### Design / product material



Stainless steel, round

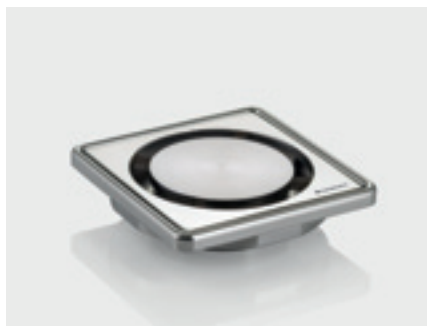


Stainless steel, square



### Problem-free installation

The proven installation kit for the Geberit floor drain for showers is very efficient in installation and reliable in its result, e.g. thanks to the sealing foil that is already injected at the factory.



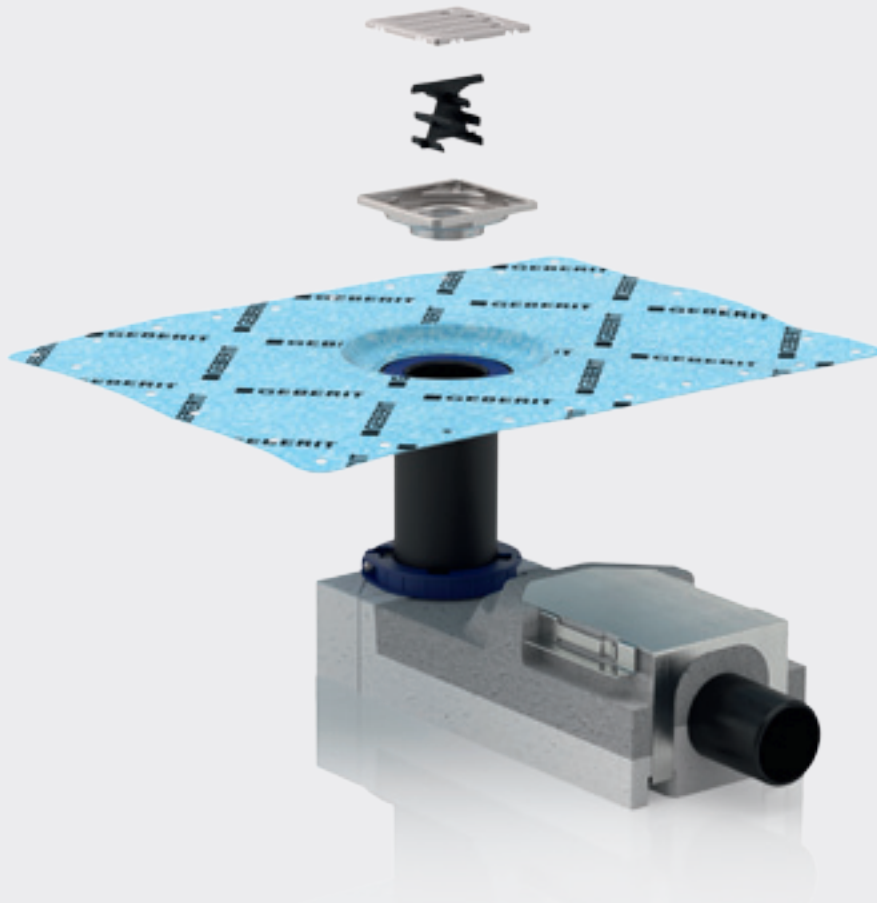
### Maximum reduction and precision

The Geberit floor drain for showers convinces with its very compact construction (only 80 × 80 mm grating area) and with its very high functionality. The height, inclination and offset of the grating can be adjusted to match the tile placement.



### Always a clean trap and waste

Under the grating, there is an integrated comb insert which can be easily removed and washed out for cleaning. This effectively prevents clogging in the trap, waste and discharge pipes.



- 
- Intelligent details for uncomplicated installation
  - Design grating made of solid stainless steel
  - Simple cleaning thanks to integrated comb insert
  - New compact design

Geberit Sales Ltd  
Geberit House  
Academy Drive  
Warwick  
Warwickshire  
CV34 6QZ

T: 0800 077 8365

F: 0844 800 6604

Eire: +44(0)1926 516 800

Literature: 0800 007 5133

enquiries@geberit.co.uk

→ [www.geberit.co.uk](http://www.geberit.co.uk)