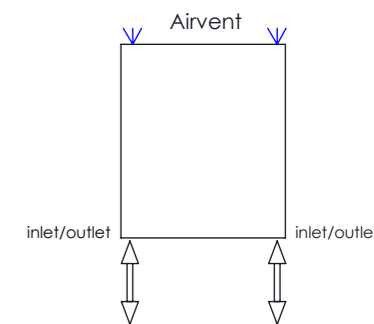


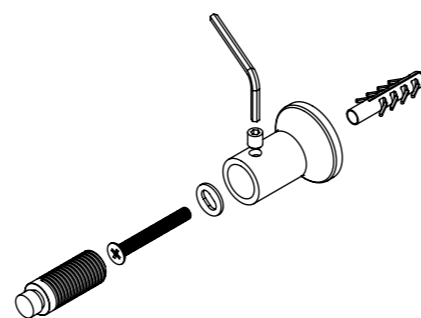
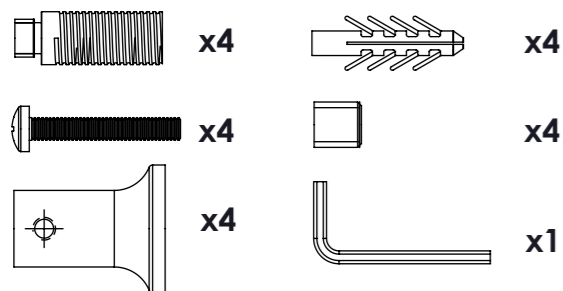
Plumbing Position:



Vertical mount
 All Dimensions are in mm
 Max.Working Pressure: 10 Bar
 Max.Working Temperature: 95° C
 Inlet / Outlet : 1/2" BSP
 Fuel : E/H/D

Manufacturing Tolerance : - 5 mm

Installation Accessories:



PRODUCT CODE	Height	Length	Depth	Pipe Centres	Bracket Centres	
	H mm	L mm	D mm	C mm	F mm	S mm
TOR407-2	718	400	32	368	580	368
TOR410-3	1044	400	32	368	906	368
TOR415-4	1550	400	32	368	1412	368
TOR507-2	718	500	32	468	580	468
TOR510-3	1044	500	32	468	906	468
TOR515-4	1550	500	32	468	1412	468