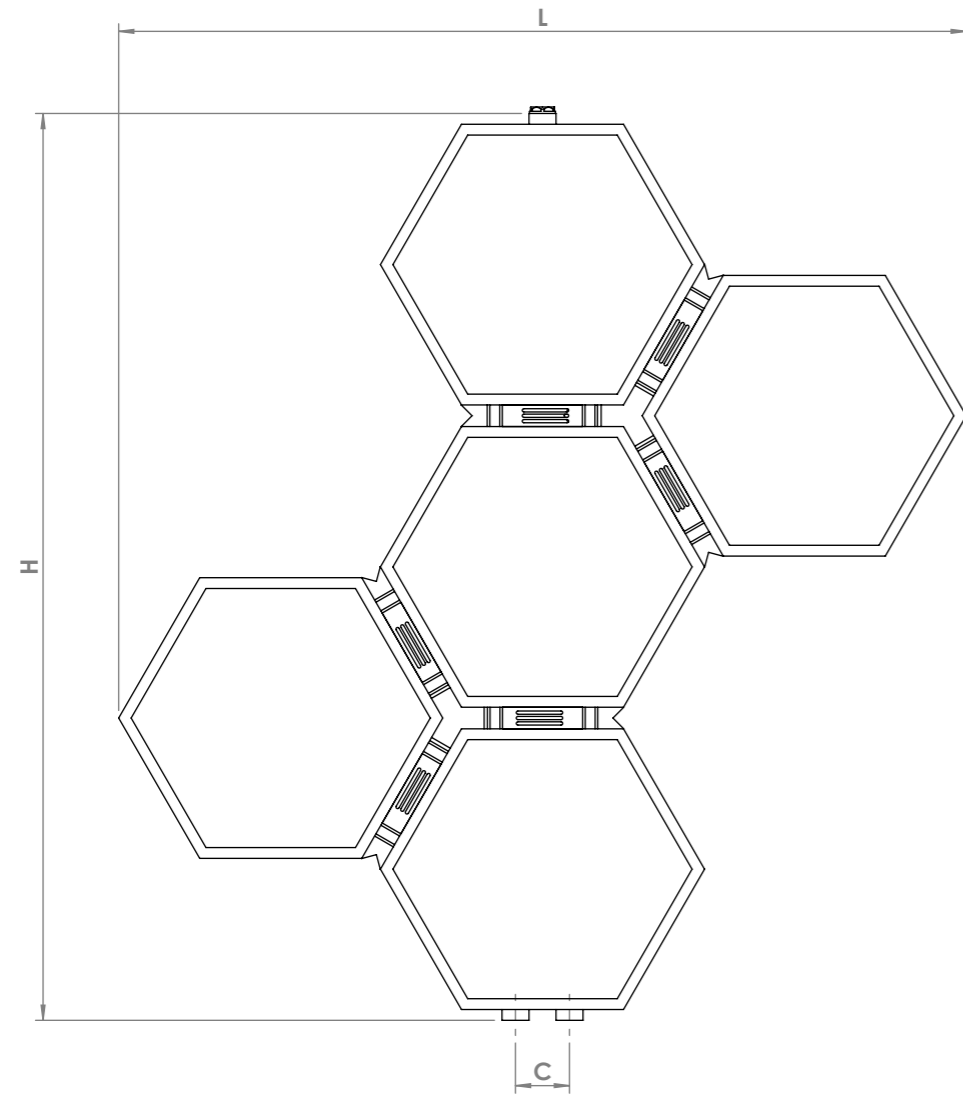
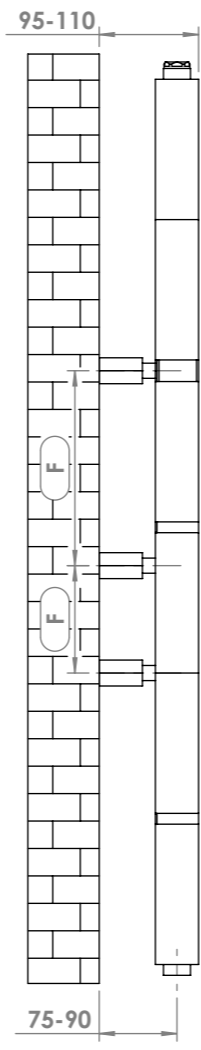


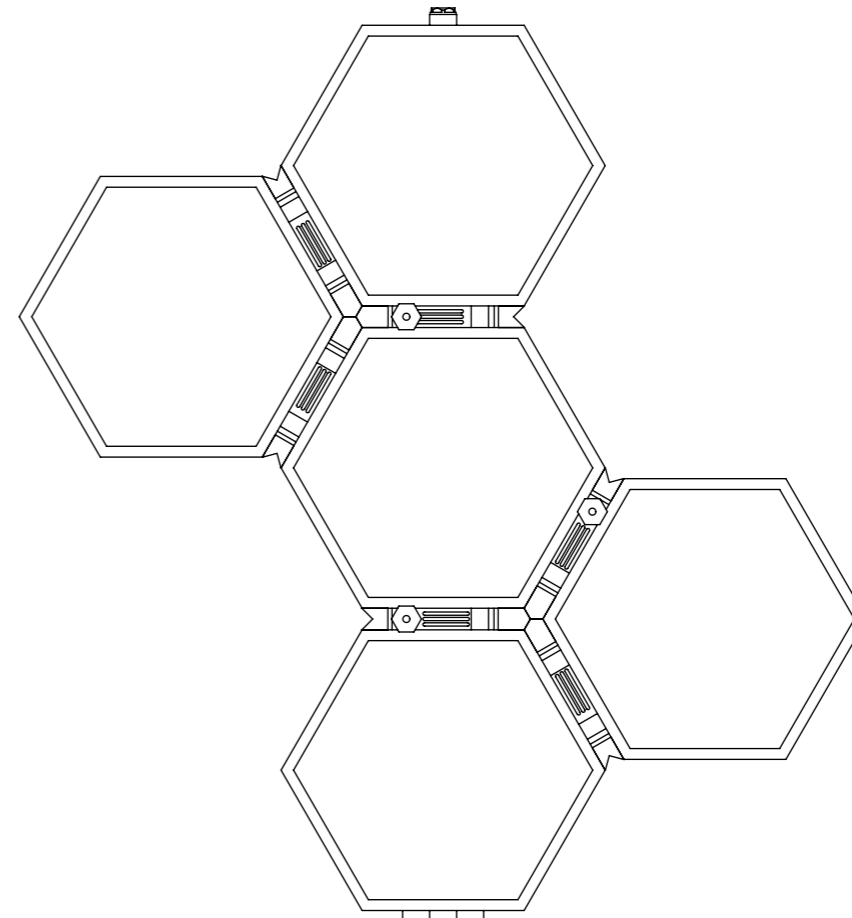
# HONEY COMB



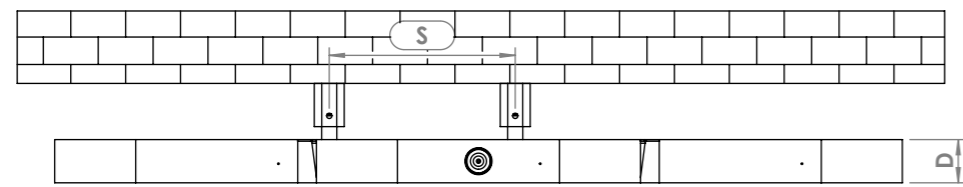
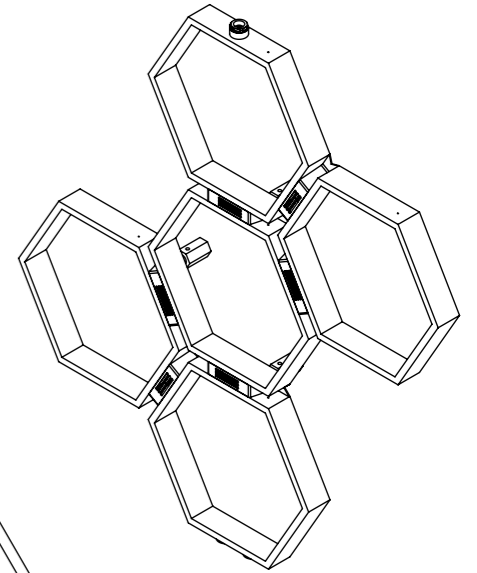
Front View



Side View


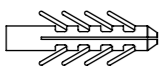

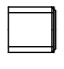
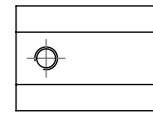



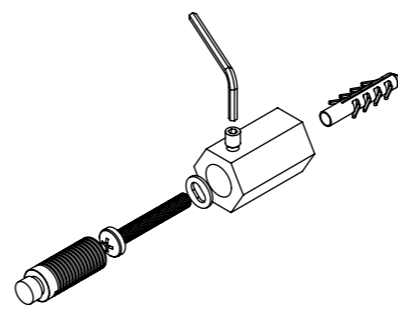
Back View



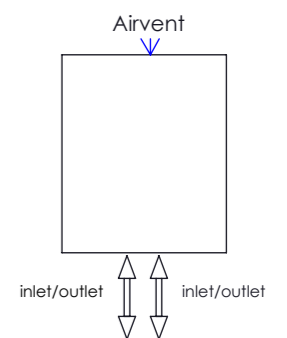
Top View

**Installation Accessories:**

-  x4       x4
-  x4       x4
-  x4       x1



**Plumbing Position:**



Vertical mount  
 All Dimensions are in mm  
 Max.Working Pressure: 10 Bar  
 Max.Working Temperature: 95° C  
 Inlet / Outlet : 1/2" BSP  
 Fuel : H

Manufacturing Tolerance : - 5 mm

PRODUCT CODE	Height	Length	Depth	Pipe Centres	Bracket Centres	
	H mm	L mm	D mm	C mm	F mm	S mm
HON3	580	550	40	50	99-99	172
HON5	840	785	40	50	180-99	172
HON7	1120	785	40	50	239-280	138-68
HON9	1400	785	40	50	280-280	68