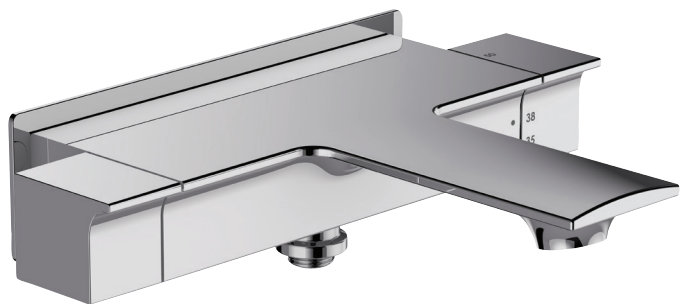


Thermostatic single-lever 9103D



Collection: STANCE

Finish*:



CP - Polished
Chrome

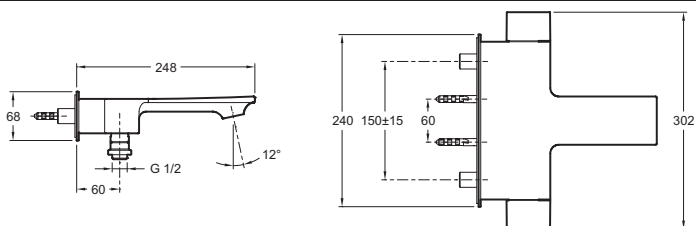
Main features:



Features

- **Installation:** Wall-mount
- **Safety stop** at 38°
- **Non-return valves** on supplies
- **Diverter** built into flow handle
- **Connection:** With connectors and wall escutcheons
- **Maximum temperature** 50°
- **Connectors** with wall escutcheons
- **Anti-scale aerator**

Technical drawing



Product Specification: Thermostatic single-lever. 9103D. Collection: STANCE. Installation: Wall-mount. Connection: With connectors and wall escutcheons. Safety stop at 38°. Maximum temperature 50°. Non-return valves on supplies. Connectors with wall escutcheons. Diverter built into flow handle. Anti-scale aerator.